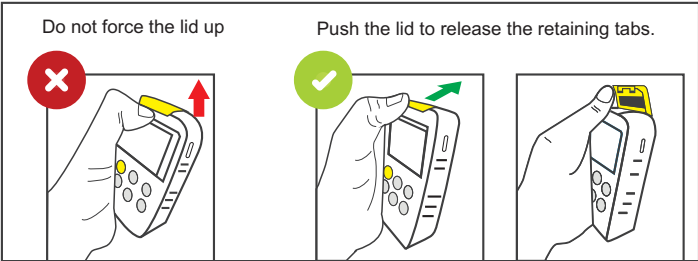




Fiber Test UTP

Mini Optical Power Meter, Visual Fault Locator  
& RJ45 connection tester

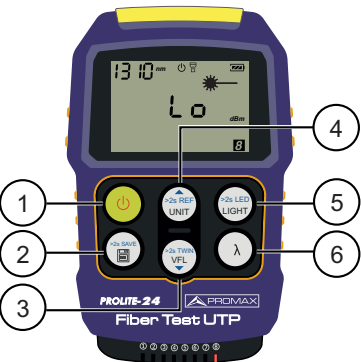


www.promaxelectronics.com

Introduction

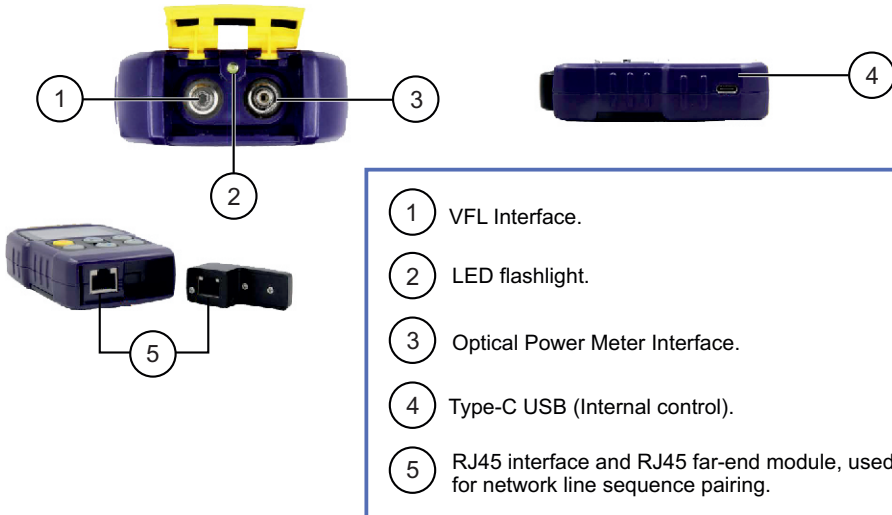
The PROLITE-24 is a multifunctional optical power meter. It integrates the functions of a Visual Fault Locator (VFL) and RJ45 Ethernet Cable Tester. It also has a flashlight. Its small size (pocket size) makes it a very lightweight, strong and durable tool. It is an instrument that is specially suitable for applications such as FTTx broadband installation and maintenance tests and comprehensive tests of fiber optic network cable.

Description of the controls and elements.



- 1 Short press to turn on / long press to turn off (Short press to turn off the Auto-off function when starting up); In user calibration mode, short press to save the current calibration value.
- 2 Short press, enter/quit data history mode. Long press to save the current optical values.
- 3 Turn on/off VFL, short press to switch working mode CW/1Hz/2Hz; Short press in user calibration mode to decrease 0.05 dB. Long press to change "Single / Twin" mode.
- 4 Short press to switch the measurement unit between dBm, dB and mW; Press and hold to select the current measurement value as the reference value; Short press in calibration mode to increase 0.05 dB.
- 5 Short press, screen backlight; Long press, flashlight.
- 6 Select measurement wavelength: 850/1300/1310/1490/1550/1625/1650 nm.

Description of the controls and elements.



Specifications	
<b>OPTICAL POWER METER</b> Detector type Calibrated Wavelength Measurement range Frequency identification Resolution Accuracy Measurement units Measurement modes Optical connector	InGaAs 850 / 1300 / 1310 / 1490 / 1550 / 1625 / 1650 nm From -70 dBm to +6 dBm 270 Hz / 330 Hz / 1 kHz / 2 kHz 0.01 dBm ± 5 % dBm / dB / mW Normal or based on a user-defined reference value 2.5 mm universal interface (support FC, SC and ST connectors)
<b>VISUAL FAULT LOCATOR</b> Output wavelength Output power Output mode Optical port	650 nm ±3 nm 2 mW CW / 1 Hz / 2 Hz 2.5 mm universal interface (support FC, SC and ST connectors)
<b>TESTER ETHERNET</b> Connection Operating mode	Connection of the ends of the ethernet cable to the remote module, and to the equipment Sequential test of the 8 wires of the RJ-45 cable
<b>OTHERS</b> Display Flashlight Calibration	Backlit LCD LED flashlight Selectable calibration mode
<b>POWER SUPPLY</b>	3 x AAA batteries Auto power-off 10 minutes
<b>MECHANICAL FEATURES</b> Dimensions Weight	67 (W.) x 104 (H.) x 28 (D.) mm 140 gr