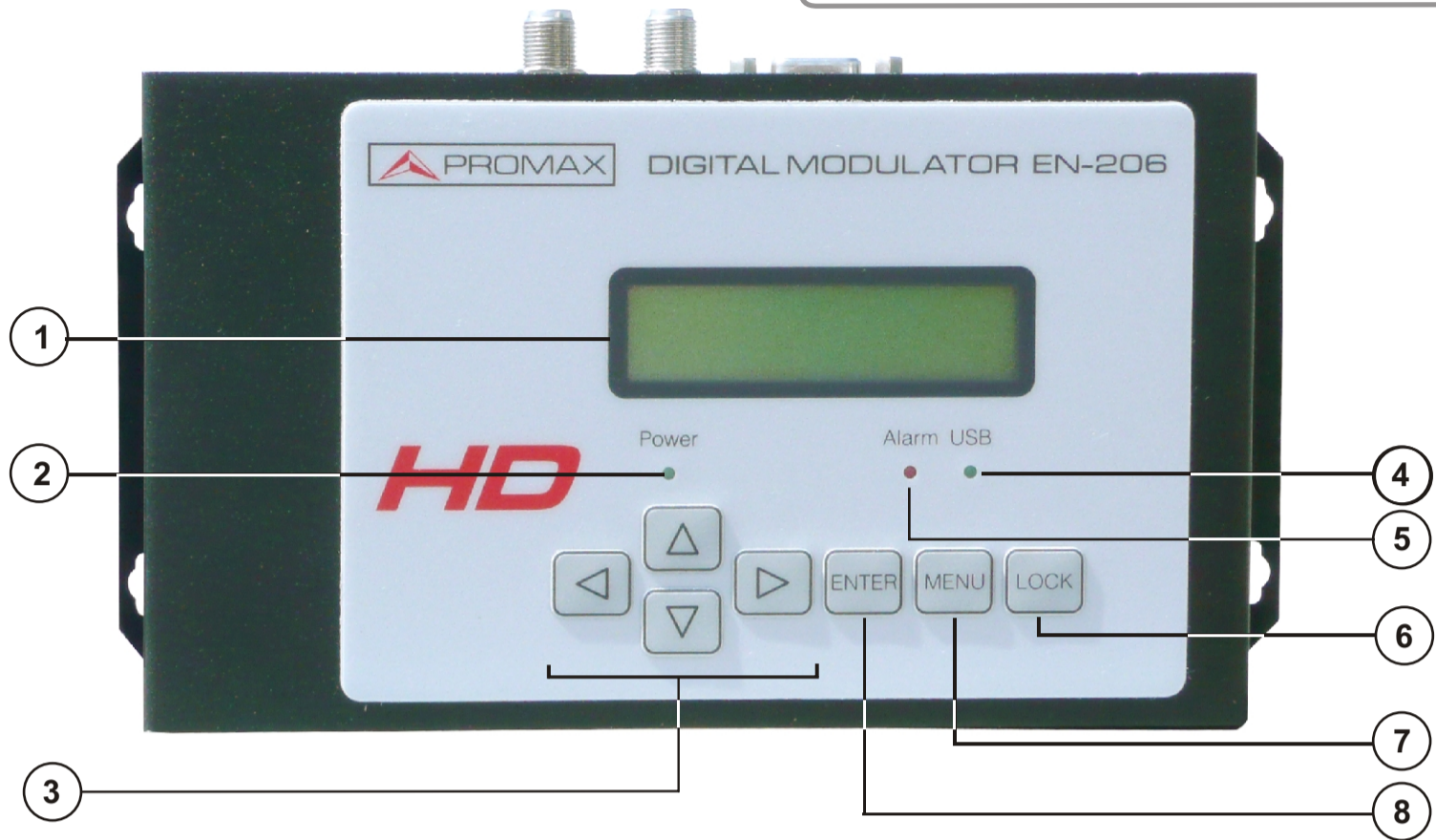


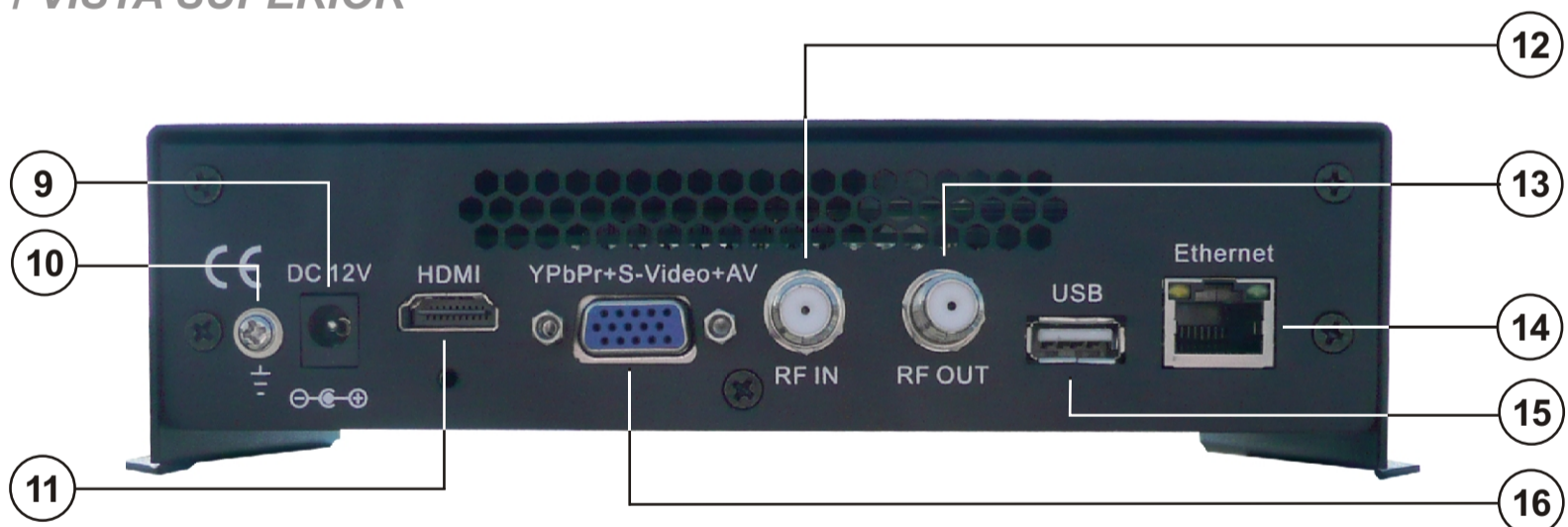
FRONT VIEW / VISTA FRONTAL

MULTISTANDARD
DVB-T / DVB-C / J83.B / J83.C / ISDB-T / ATSC



- | | |
|--|----------------------------------|
| ① LCD Display / Pantalla LCD | ⑤ Alarm LED / LED de Alarma |
| ② Power LED / LED de Encendido | ⑥ Lock key / Tecla de Bloqueo |
| ③ Control keys / Teclas de Control | ⑦ Menu key / Tecla acceso a Menú |
| ④ USB Lock LED / LED de USB enganchado | ⑧ Enter key / Tecla Enter |

UP VIEW / VISTA SUPERIOR



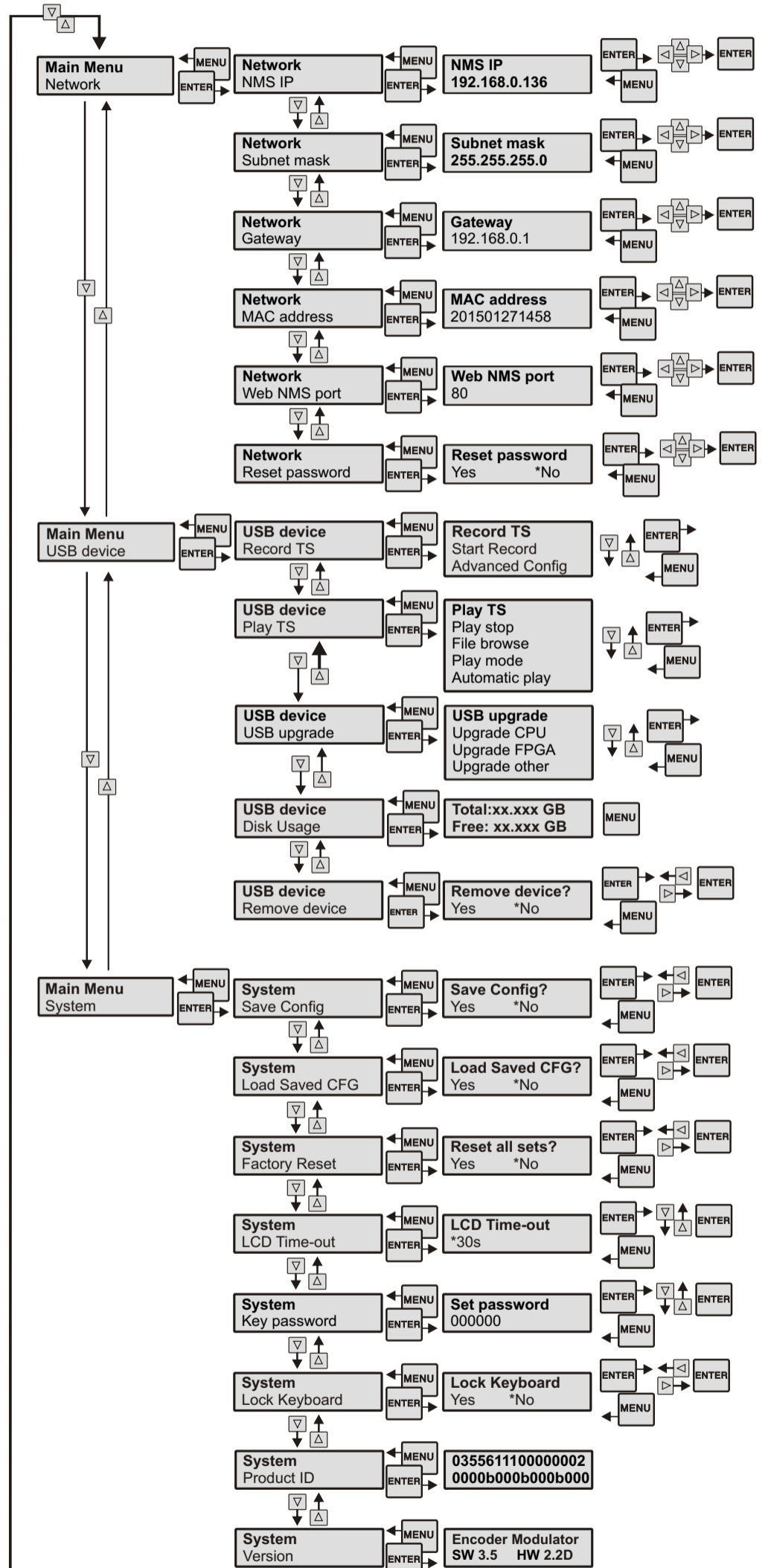
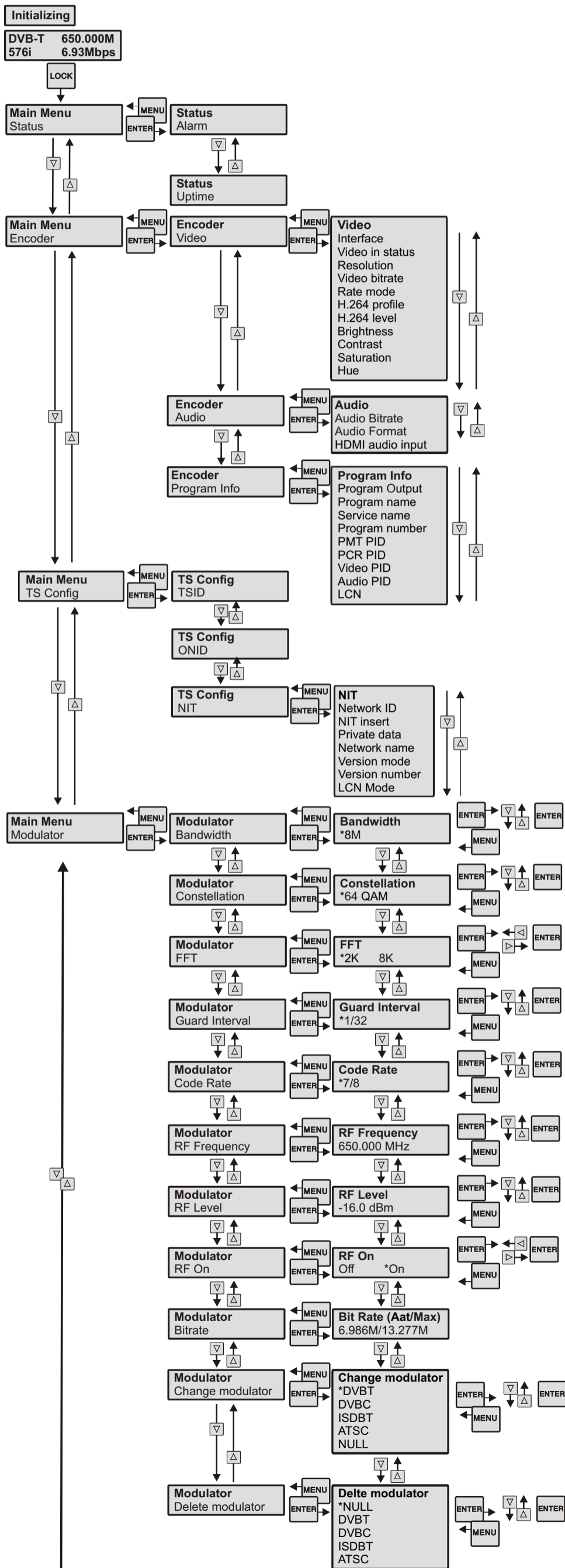
- | | |
|--|--|
| ⑨ DC 12V | ⑬ RF OUT / Salida RF |
| ⑩ Earth connection /
Conexión de tierra | ⑭ Ethernet port /
Puerto Ethernet |
| ⑪ HDMI In / Entrada HDMI | ⑮ USB port / Puerto USB |
| ⑫ RF IN / Entrada RF | ⑯ YPbPr + S-Video + AV Input /
Entrada YPbPr + S-Video + AV |



MENU TREE / ÁRBOL DE MENÚS

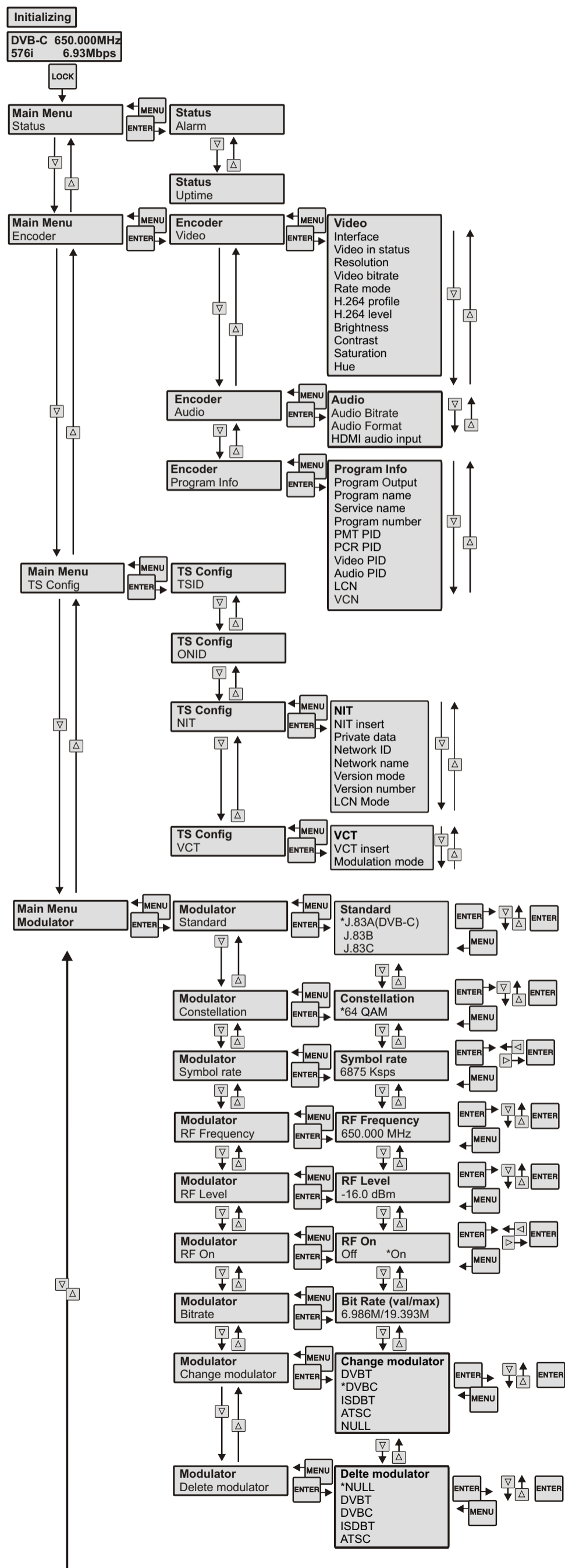
Modulator Mode / Tipo de Modulación: DVB-T

To change modulation go to: / Para cambiar de modulación ir a:
Main Menu \ Modulator \ Change Modulator



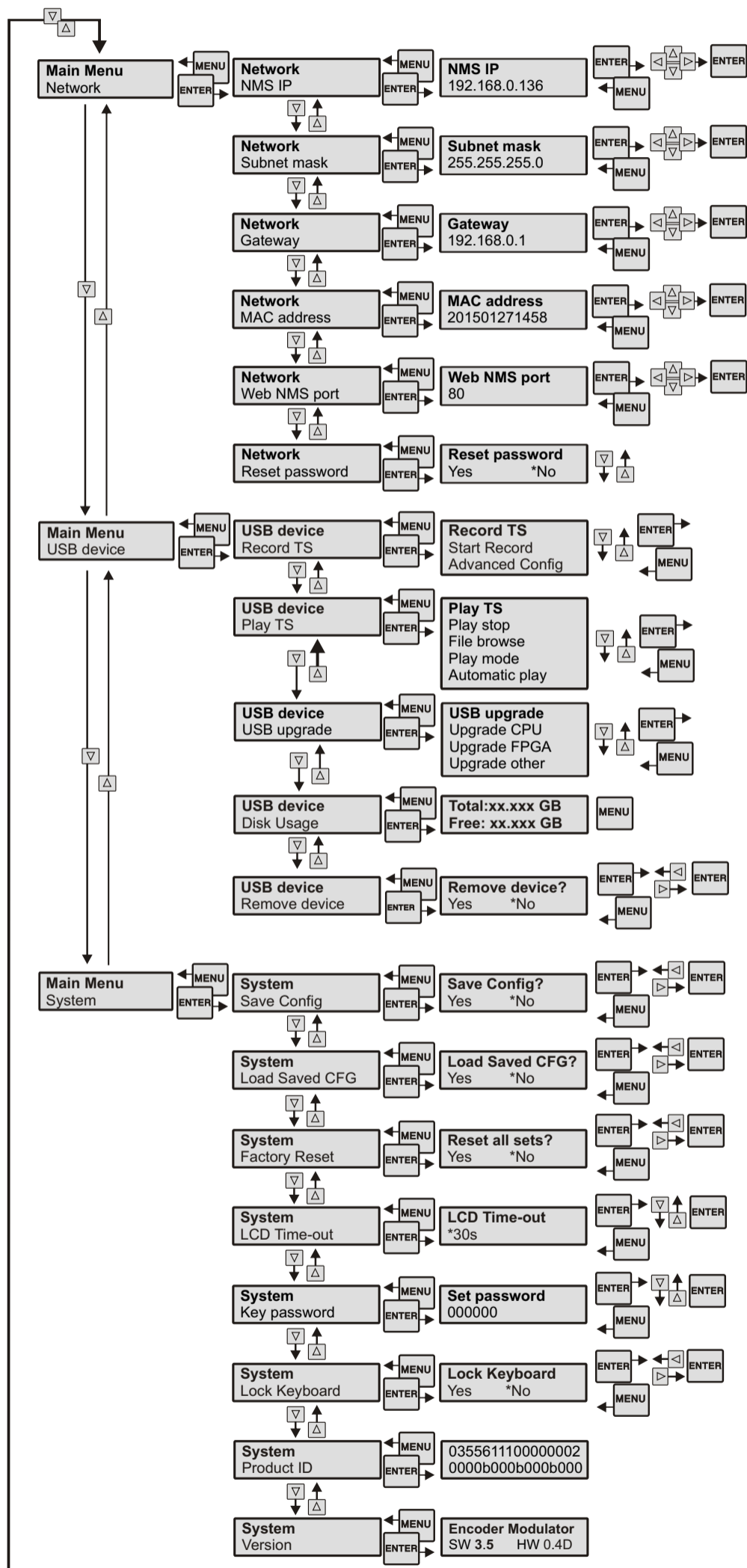
When a modulation is deleted, it cannot be restored.
Cuando se borra una modulación ya no puede recuperarse.

MENU TREE / ÁRBOL DE MENÚS



Modulator Mode / Tipo de Modulación: DVB-C / J83.B / J83.C

To change modulation go to: / Para cambiar de modulación ir a:
Main Menu \ Modulator \ Change Modulator
Main Menu \ Modulator \ Standard

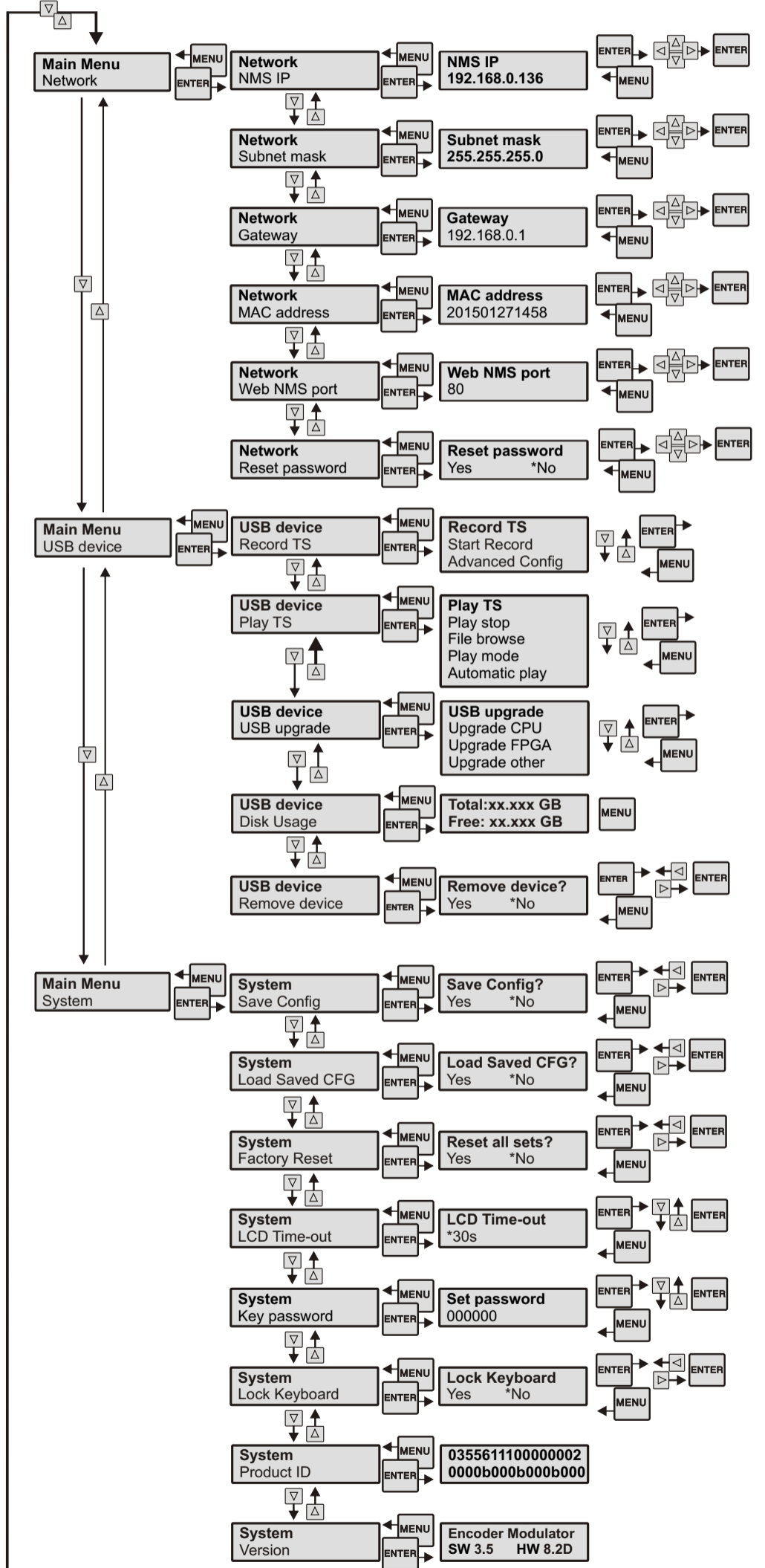
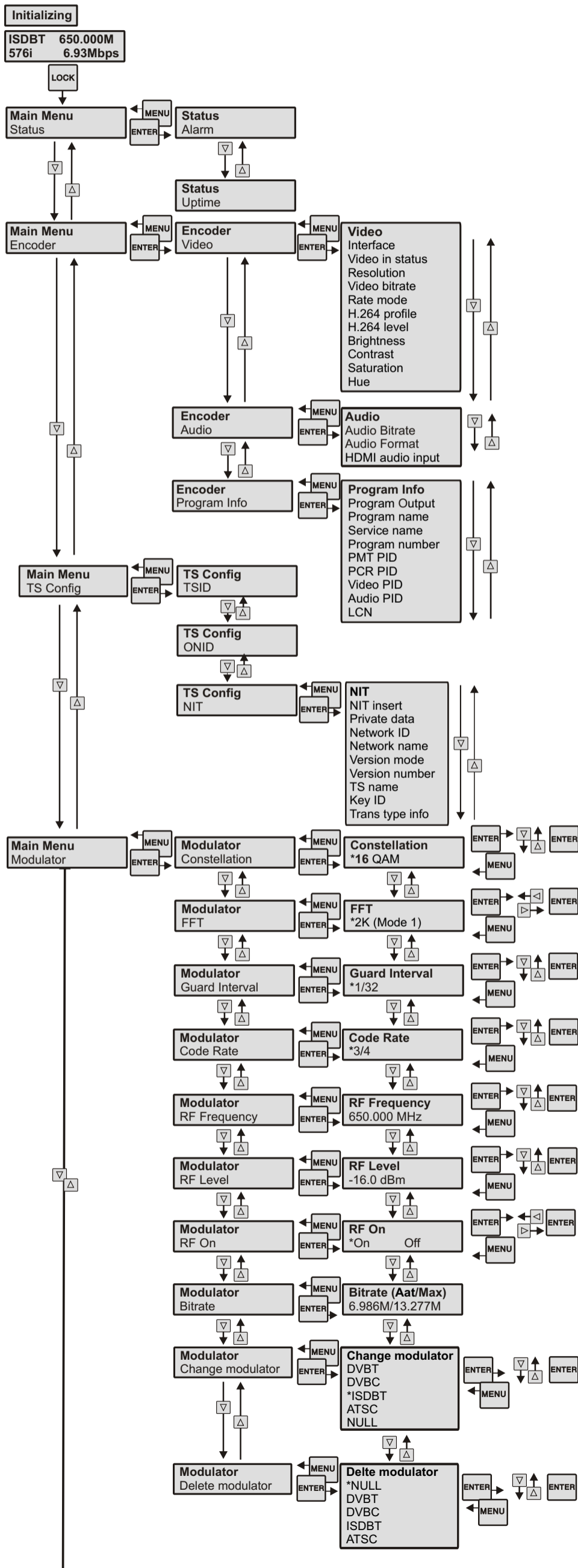


When a modulation is deleted, it cannot be restored.
Cuando se borra una modulación ya no puede recuperarse.

MENU TREE / ÁRBOL DE MENÚS

Modulator Mode / Tipo de Modulación: ISDB-T

To change modulation go to: / Para cambiar de modulación ir a:
Main Menu \ Modulator \ Change Modulator

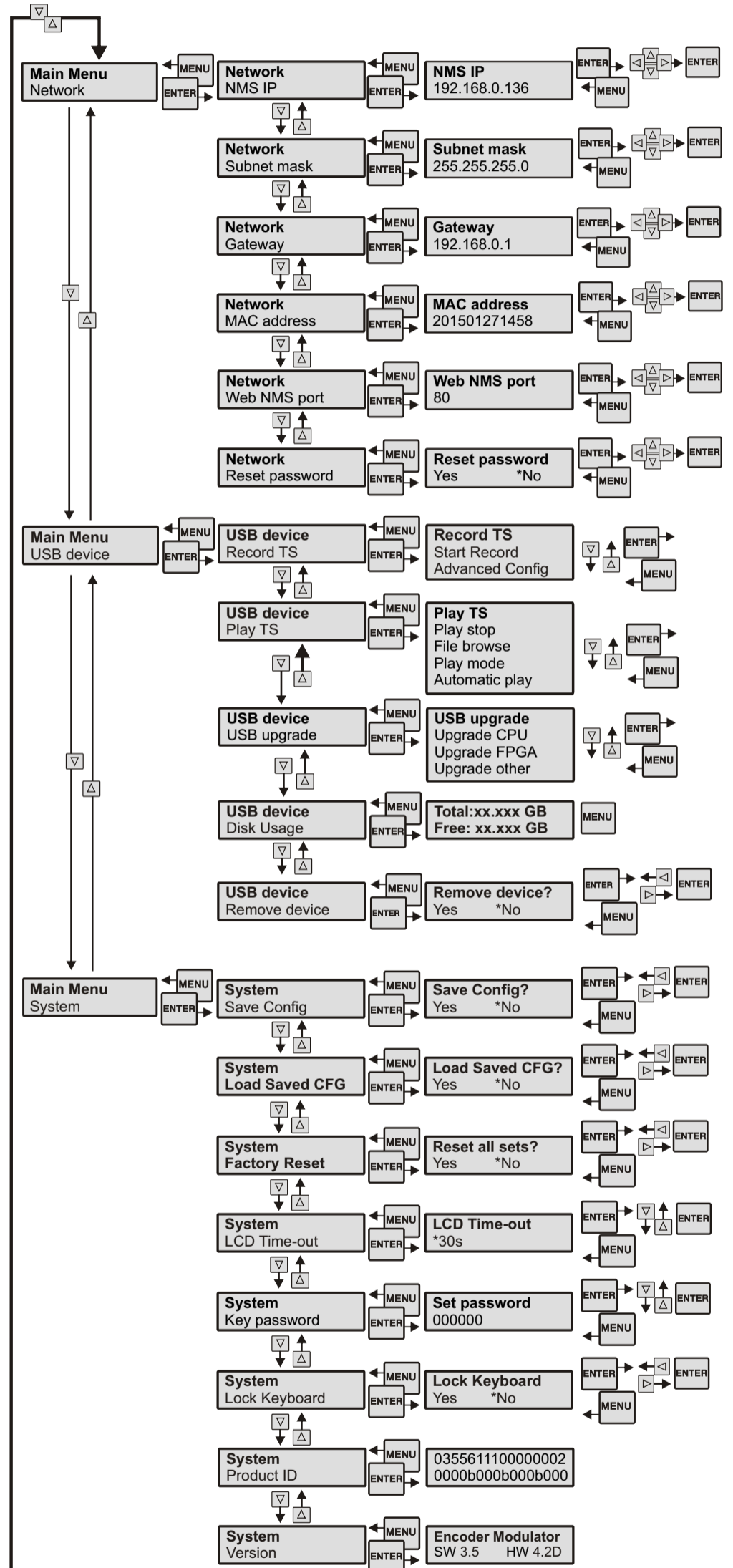
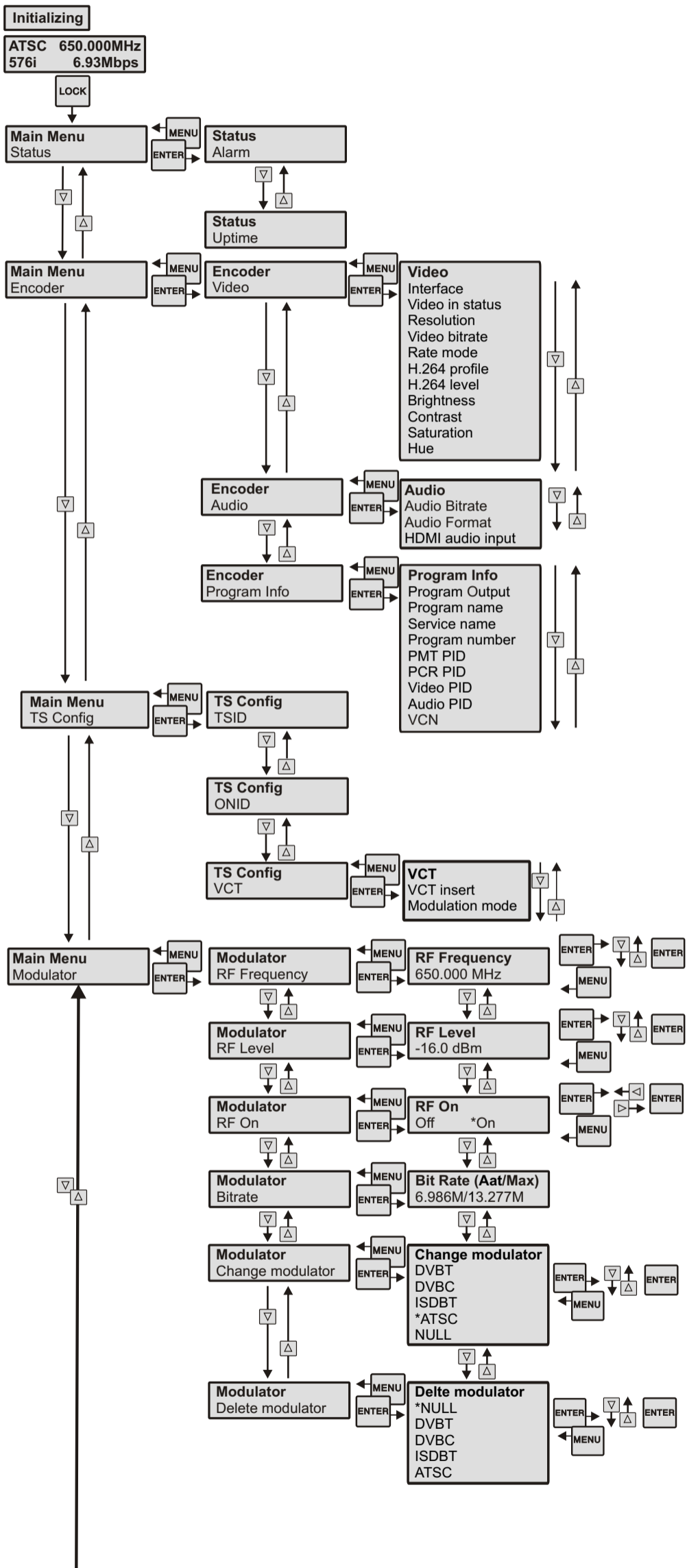


When a modulation is deleted, it cannot be restored.
Cuando se borra una modulación ya no puede recuperarse.

MENU TREE / ÁRBOL DE MENÚS

Modulator Mode / Tipo de Modulación: ATSC

To change modulation go to: / Para cambiar de modulación ir a:
Main Menu \ Modulator \ Change Modulator



When a modulation is deleted, it cannot be restored.
Cuando se borra una modulación ya no puede recuperarse.