

FIRMWARE UPGRADE PROCEDURE FOR THE HD RANGER and HD RANGER+

Acquiring any of the instruments of the **HD RANGER** product family, the customers are entitled for a **FREE LIFETIME firmware upgrade**. Keeping the equipment up-to-date is very important, as it helps to obtain the maximum benefit from the instruments. PROMAX is periodically releasing new firmware versions for the different products of the **HD RANGER** product family. The procedure for upgrading the firmware of the instruments is detailed below.

1 Program download and installation

In order to upgrade the firmware of the instruments easily, it is highly recommended to download and install the latest version of the **NetUpdate** software. This software is available from the download section of the **PROMAX** website:

<http://www.promaxelectronics.com/ing/downloads/index.php?show=Firmware&product=HDRangerp>



Figure 1.

The download process takes approximately 5-10 minutes, depending on your Internet connection:



Figure 2.

Once downloaded, go to the download folder and unzip the application:

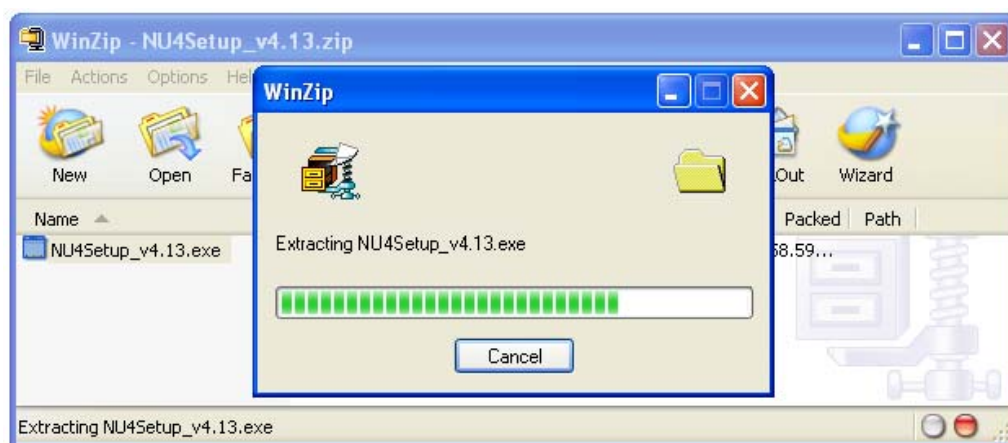


Figure 3.

Run the NUSetup_v4.xx file (where xx is the current software version) and choose your language from the drop-down menu:



Figure 4.

Follow the Setup procedure by pressing the Next button. The setup may eventually run another program setup processes. Please keep on pressing the Next button until the end of the program installation:

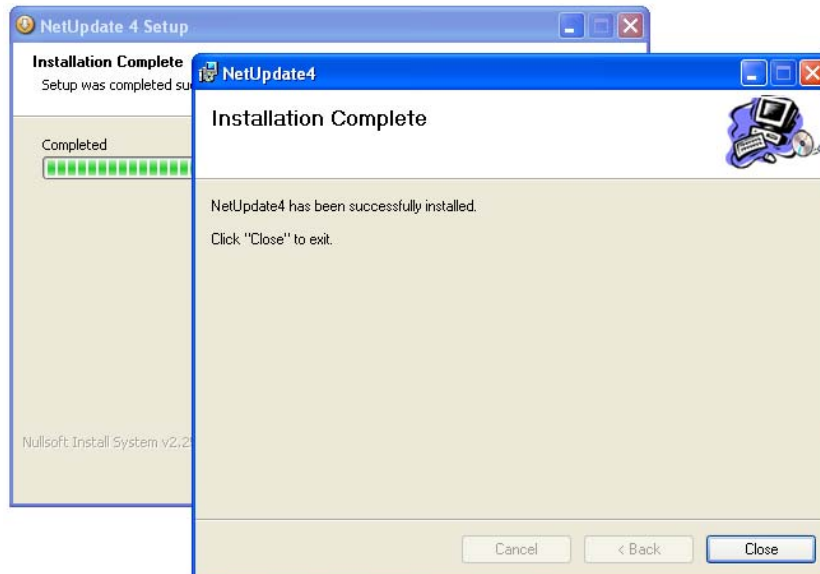


Figure 5.

Once installed, the program will show the message “NetUpdate installation was completed successfully”.



Figure 6.

Once installed, the NetUpdate program will periodically check if new updates of the programs or of the managed equipment are available, and it will offer the possibility to download and install them.

2 USB driver setup

The products included in the **HD RANGER** family require special drivers in order to be connected and recognized by the computer operating system. The driver installation is an automated process, which is performed during the NetUpdate installation.

PLEASE DO NOT CONNECT THE INSTRUMENT TO THE COMPUTER BEFORE THE CORRESPONDING DRIVERS HAVE BEEN INSTALLED.