

MANUAL DE CONFIGURACIÓN DEL CPR (ComPortRedirector)

Versión	Fecha	Versión Software
2.0	Abril 2015	4.3.0.3.

CPR CONFIGURATION MANUAL (ComPortRedirector)

Version	Date	Software Version
2.0	April 2015	4.3.0.3.

MANUELLE DE CONFIGURATION DU CPR (ComPortRedirector)

Version	Date	Version Logiciel
2.0	Avril 2015	4.3.0.3.

MANUAL DE CONFIGURACIÓN DEL CPR (ComPortRedirector)

1 Instalación

1.1 Requisitos previos a la instalación

El ordenador donde se vaya a instalar esta aplicación ha de cumplir con los siguientes requisitos:

- Ordenador compatible Pentium o superior.
- Sistemas Operativos compatibles:
 - x86 (32 bit): Windows XP, 2003 Server, Vista, 7 y 2008 Server.
 - x64 (64bit): Windows Vista, 7 y 2008 Server.
- Microsoft.NET Framework v4.0 o superior.
- 30 MB disponibles en el disco duro.

1.2 CONFIGURACIÓN del puerto COM virtual (CPR).

Siga los siguientes pasos para crear y configurar el puerto **COM** virtual:

1. Descomprima y ejecute el archivo de instalación **CPR manager**, que se encuentra en el CD suministrado o descárguelo del área de descargas de la web de PROMAX:

www.promax.es

2. Conecte la cabecera **DTTV** y el PC a una red LAN (Ethernet).

IMPORTANTE: El PC y la cabecera **DTTV** deben tener direcciones IP del mismo rango y máscara de subred. Modifique los parámetros IP de la cabecera **DTTV** o del PC si es necesario (si se cambia la IP de la cabecera, no olvide guardar, apagar y reiniciar la cabecera para que el cambio sea efectivo).

Tenga en cuenta que si la conexión se realiza mediante conexión directa del PC a la cabecera **DTTV**, el cable Ethernet utilizado debe ser cruzado ("cross-over").

Se puede verificar la conexión haciendo un ping desde el PC a la dirección IP de la cabecera **DTTV**.

- Una vez realizada la conexión física, ejecute el software **CPR Manager**. Se encuentra en el menú **Inicio > Lantronix > CPR > CPR Manager**. Se muestra en la siguiente figura:

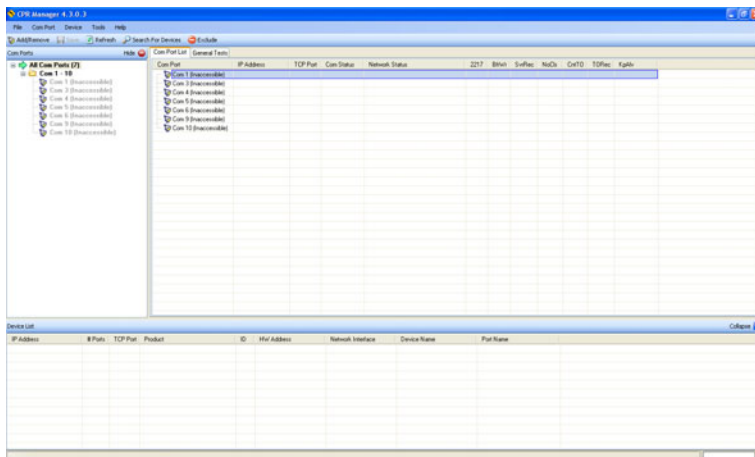


Figura 1.-

- Haga clic en el botón  o ir a **ComPort > Add and Remove** para crear un nuevo puerto COM virtual. Aparece la siguiente ventana:

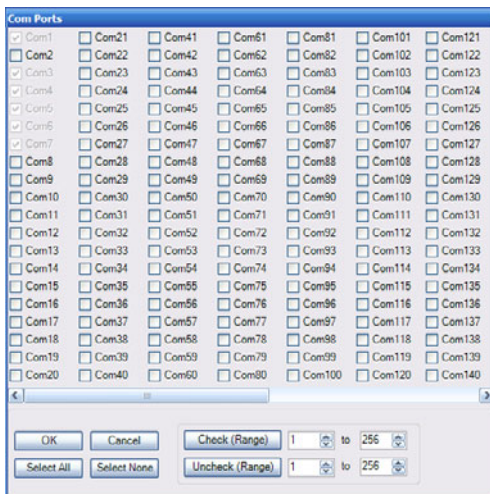


Figura 2.-

5. Compruebe en la lista el primer puerto **COM** que esté libre (por ejemplo, COM8) y luego haga clic en **OK** para confirmar y volver a la ventana principal:

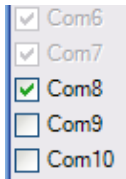


Figura 3.-

6. En la ventana principal, el nuevo puerto **COM** (por ejemplo, COM8) aparece ahora en la lista de puertos disponibles:

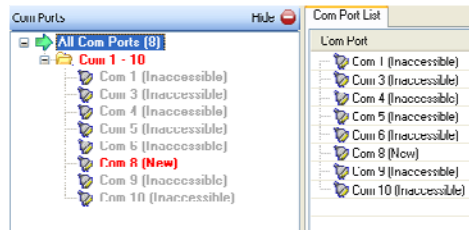


Figura 4.-

7. Seleccione con el ratón el puerto nuevo que se acaba de crear (por ejemplo, COM8) en la lista de la izquierda. En el panel derecho se muestran los parámetros de configuración siguientes:

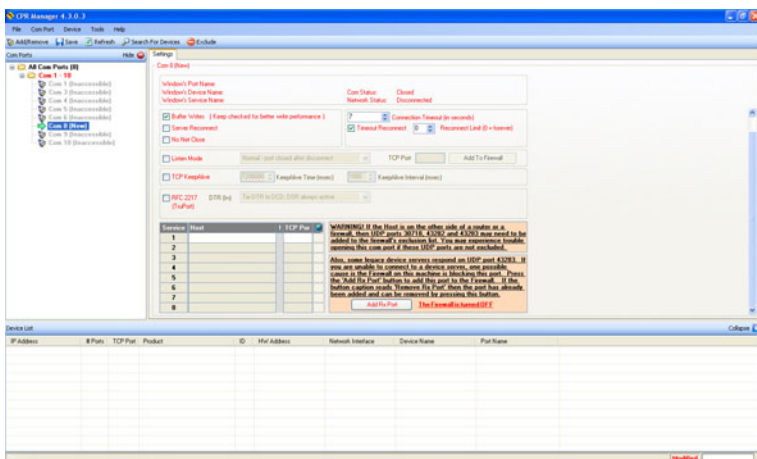



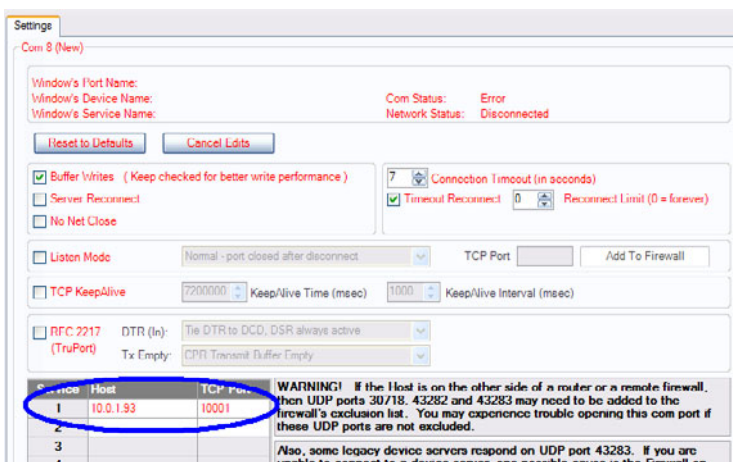
Figura 5.-

- Detecte la cabecera Digital To TV. Para ello, haga clic en el botón  o seleccione el menú **Device > Search**. En la parte inferior de la ventana se muestra una lista de todos los sistemas detectados (en este ejemplo, un solo sistema):

IP Address	B Ports	TCP Port	Product	ID	HW Address	Network Interface	Device Name	Port Name
10.0.1.93 (1)		10001	XPort-03	X5	00:20:4A:AD:3F:06	PROMAX		

Figura 6.-

- Por favor, haga **doble clic** en la IP correspondiente a la cabecera **DTTV** que desea controlar (si hay varias). El programa asigna automáticamente la dirección IP del sistema al puerto COM seleccionado (es decir, COM8):



Settings
Com 8 (New)

Window's Port Name:
Window's Device Name:
Window's Service Name:

Com Status: Error
Network Status: Disconnected

Reset to Defaults Cancel Edits

Buffer Writes (Keep checked for better write performance)
 Server Reconnect
 No Net Close

7 Connection Timeout (in seconds)
 Timeout Reconnect: 0 Reconnect Limit (0 = forever)

Listen Mode Normal - port closed after disconnect TCP Port /Add To Firewall

TCP KeepAlive 7200000 Keep/Alive Time (msec) 1000 Keep/Alive Interval (msec)


RFC 2217 (TruPort) DTR (In): Tie DTR to DCD, DSR always active
Tx Empty: CPR Transmit Buffer Empty

Index	Host	TCP Port
1	10.0.1.93	10001
2		
3		
4		

WARNING! If the Host is on the other side of a router or a remote firewall, then UDP ports 30/18, 43282 and 43283 may need to be added to the firewall's exclusion list. You may experience trouble opening this com port if these UDP ports are not excluded.

Also, some legacy device servers respond on UDP port 43283. If you are unable to connect to a device server, one possible cause is the Firewall on

Figura 7.-

- Haga clic en el botón  para guardar la configuración. Si trabaja con Windows XP o superior, es posible que aparezcan ventanas de confirmación adicionales. En todos los casos pulse sobre "Continuar":



Instalación de hardware

 El software que está instalando para este hardware:

no ha superado la prueba del logotipo de Windows que comprueba que es compatible con Windows XP. (¿Por qué es importante esta prueba?)

Si continúa con la instalación de este software puede crear problemas o desestabilizar la correcta funcionalidad de su sistema bien inmediatamente o en el futuro. Microsoft recomienda que detenga esta instalación ahora y se ponga en contacto con su proveedor de hardware para consultarle acerca del software que ha pasado la prueba del logotipo de Windows.

Continuar Detener la instalación

Figura 8.-

11. A partir de este momento, se ha asignado un puerto COM virtual del PC a la cabecera DTTV. Se puede probar la conexión seleccionando el puerto COM correspondiente (por ejemplo, COM8) y haciendo clic en la pestaña Test COM (por ejemplo, Test COM8). Haga clic en "OPEN" para probar la apertura del puerto.

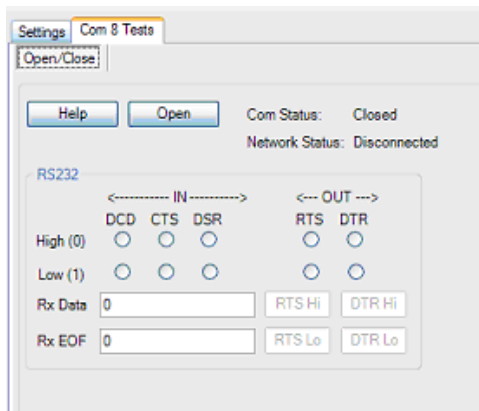


Figura 9.-

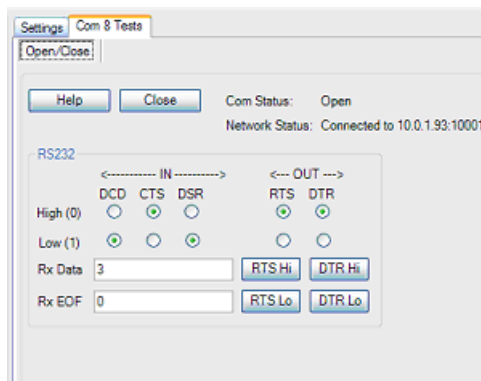


Figura 10.-

IMPORTANTE: Tome nota del número de puerto COM utilizado. Será necesario para llevar a cabo la actualización del firmware de un módulo DT-xxx.

CPR CONFIGURATION MANUAL (ComPortRedirector)

1 Installation

1.1 Prerequisites for installation

The computer where you plan to install this application must meet the following requirements:

- Pentium compatible PC or higher.
- Supported Operating Systems:
 - x86 (32 bit): Windows XP, 2003 Server, Vista, 7 and 2008 Server.
 - x64 (64bit): Windows Vista, 7 and 2008 Server.
- Microsoft.NET Framework v4.0 or higher.
- 30 MB available hard disk space.

1.2 CONFIGURING the virtual COM port (CPR).

Follow these steps to create and configure the virtual **COM** port which is:

1. Unzip and run the installation file CPR Manager, which is in the CD supplied, or download from the download area at the PROMAX webpage:

www.promaxelectronics.com

2. Connect the headend **DTTV** and the PC to a LAN network (Ethernet).

IMPORTANT: The PC and the **DTTV** headend must have IP addresses in the same range and subnet mask. Modify the IP parameters of the **DTTV** headend or the PC if necessary (if you change the IP of the headend, do not forget to save, turn off and restart the headend to make the change effective).

Note that if the connection is made by directly connecting the PC to the **DTTV** headend, the Ethernet cable used must be crossed ("cross-over").

You can check the connection by pinging from the PC to the IP address of the **DTTV** headend.

- Once the physical connection is done, run the CPR Manager software. It is located in the Start menu> Lantronix> CPR> CPR Manager. It is shown at the figure below:

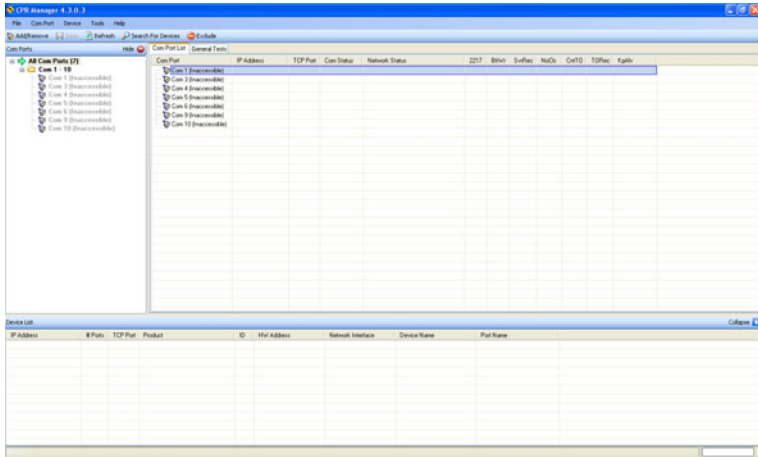



Figure 1.-

- Click the button  or go to **ComPort> Add and Remove** to create a new virtual COM port. It appears the following window:

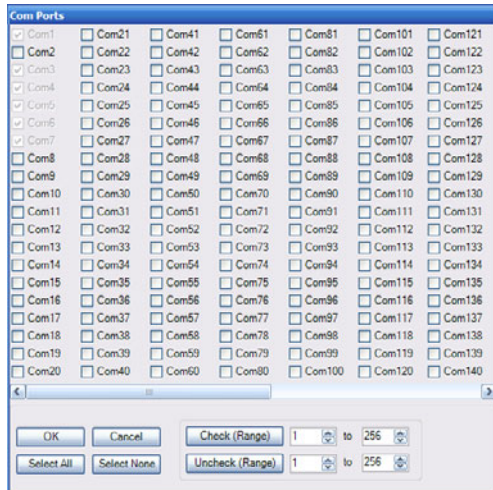


Figure 2.-

- Check the first free COM port (e.g. COM8) from the list and then click OK to confirm and return to the main window:

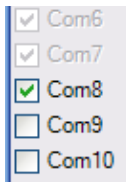


Figure 3.-

- In the main window, the new COM port (e.g. COM8) now appears in the list of available ports:

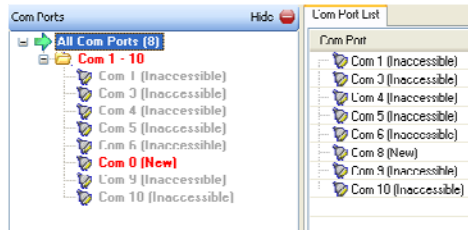


Figure 4.-

- Select the new port that has just been created (e.g. COM8) from the list on the left. The right panel displays the following settings:

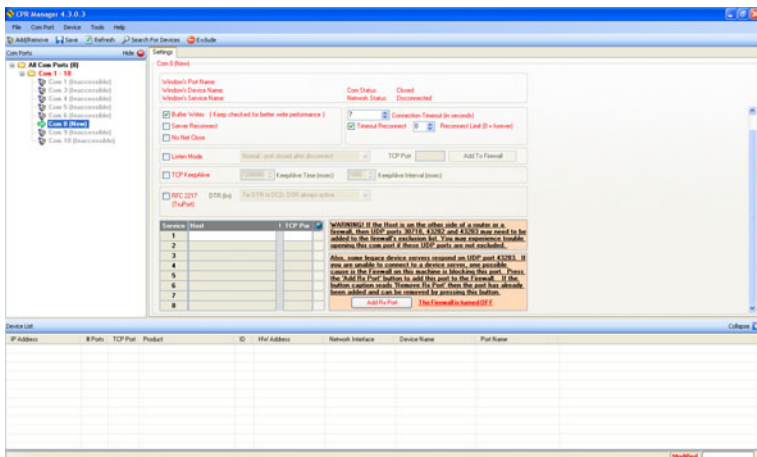



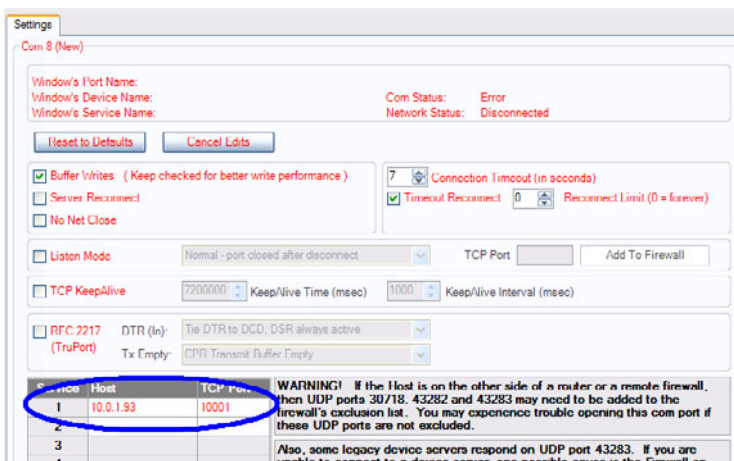
Figure 5.-

- You should detect the DigitalToTV headend. To do this, click the button  or select the menu **Device > Search**. At the bottom of the window a list displays all systems detected (in this example, one only system):

IP Address	Port	TCP Port	Product	ID	HW Address	Network Interface	Device Name	Port Name
10.0.1.93 (1)		10001	XPU4-03	X5	00:20:4A:AD:3F:06	PROMAX		

Figure 6.-

- Please, double click on the corresponding **DTTV** headend you want to control (if there are several). The program automatically assigns the IP address of the system to the selected **COM** port (e.g. COM8):



Settings
- Com 8 (New)

Window's Port Name:
Window's Device Name:
Window's Service Name:

Com Status: Error
Network Status: Disconnected

Buffer Writes (Keep checked for better write performance)
 Server Reconnect
 No Net Close

Connection Timeout (in seconds): 7
 Truncated Reconnect: 0 Reconnect Limit (0 = forever)

Listen Mode: Normal - port closed after disconnect TCP Port: Add To Firewall

TCP KeepAlive: 7200000 Keep/Alive Time (msec): 1000 Keep/Alive Interval (msec)


RFC 2217 (TruPort) DTR (In): Tie DTR to DCD, DSR always active Tx Empty: CPR Transmit Buffer Empty

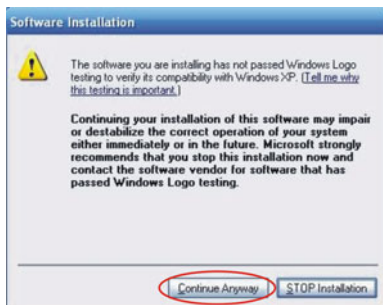
Port	Host	TCP Port
1	10.0.1.93	10001
2		
3		
4		

WARNING! If the Host is on the other side of a router or a remote firewall, then UDP ports 30718, 43282 and 43283 may need to be added to the firewall's exclusion list. You may experience trouble opening this com port if these UDP ports are not excluded.


Also, some legacy device servers respond on UDP port 43283. If you are unable to connect to a device server, one possible cause is the Firewall on

Figure 7.-

- Click the button  to save your settings. If you work with Windows XP or higher, you may see additional confirmation windows. In all cases, click "Continue":



Software Installation

 The software you are installing has not passed Windows Logo testing to verify its compatibility with Windows XP. [\(Tell me why this testing is important.\)](#)

Continuing your installation of this software may impair or destabilize the correct operation of your system either immediately or in the future. Microsoft strongly recommends that you stop this installation now and contact the software vendor for software that has passed Windows Logo testing.

Figure 8.-

- From this moment has been assigned a virtual COM port from your PC to the DTTV headend. You can test the connection by selecting the appropriate COM port (e.g. COM8) in the COM Test (e.g. Test COM8) and click on "OPEN" to test the port opening.

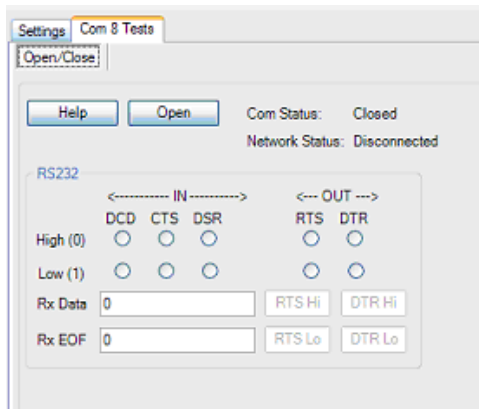


Figure 9.-

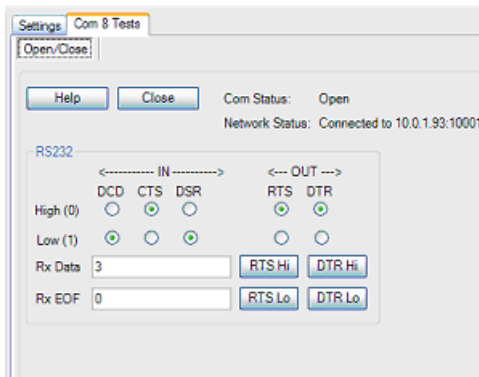


Figure 10.-

IMPORTANT: Note the COM port number used. It will be necessary to update the firmware of a DT-xxx module.

MANUELLE DE CONFIGURATION DU CPR (ComPortRedirector)

1 Installation

1.1 Pré-requis pour l'installation

L'ordinateur sur lequel vous prévoyez d'installer cette application doit répondre aux exigences suivantes:

- PC compatible Pentium ou supérieur.
- Systèmes d'exploitation supportés:
 - x86 (32 bits): Windows XP, 2003 Server, Vista, 7 et Server 2008.
 - x64 (64 bits): Windows Vista, 7 et Server 2008.
- Microsoft.NET Framework v4.0 ou supérieure.
- 30 MB d'espace de disque disponible.

1.2 CONFIGURATION du port COM virtuel (CPR)

Suivez la procédure suivante pour créer et configurer le port **COM** virtuel :

1. Décompressez et lancez le fichier d'installation du **CPR** Manager qui est au CD fourni ou téléchargez du secteur de téléchargements du site web de PROMAX:

www.promax.fr

2. Reliez la station **DTTV** et le PC à un réseau **LAN** (Ethernet).

IMPORTANT:

Le PC et la station **DTTV** doivent avoir des adresses IP de la même famille et le même « masque de sous-réseau ». Modifiez les paramètres IP de la station **DTTV** ou du PC si nécessaire (si vous modifiez l'IP de la station, n'oubliez pas de sauvegarder, éteindre et redémarrer la station pour qu'elle devienne effective).

Notez que si la connexion se fait en branchant directement le PC à la station **DTTV**, le cordon Ethernet utilisé doit être croisé (« cross-over »).

Vous pouvez vérifier la connexion en effectuant depuis le PC un ping à l'adresse IP de la station **DTTV**.

- Une fois la connexion physique est effectuée, lancez le logiciel CPR Manager. Vous le trouverez dans le menu **Démarrer > Lantronix > CPR > CPR Manager**. La fenêtre suivante d'affiche :

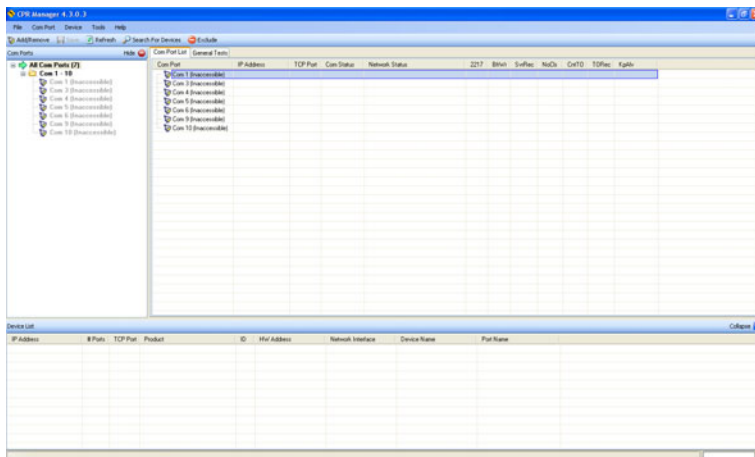



Figure 1.-

- Cliquez sur le bouton  ou allez sur **ComPort > Add and Remove** pour créer un nouveau port COM virtuel. La fenêtre suivante s'affiche :

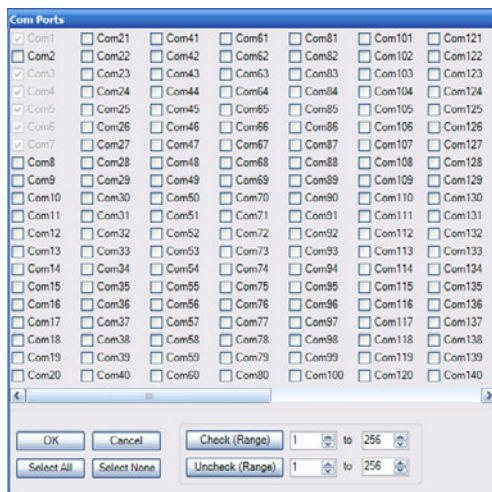


Figure 2.-

5. Cochez dans la liste le premier port **COM** qui soit libre (i.e. COM8) puis cliquez sur **OK** pour valider et retourner à la fenêtre principale :

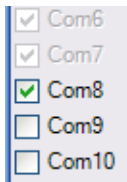


Figure 3.-

6. Dans la fenêtre principale, le nouveau port **COM** (i.e. COM8) apparait maintenant dans la liste de ports disponibles :

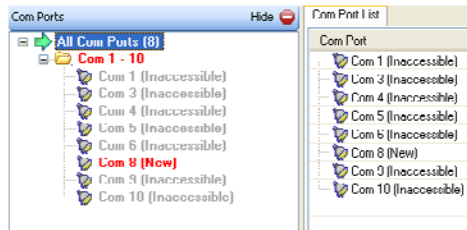


Figure 4.-

7. Sélectionnez avec la souris le nouveau port qui vient d'être créé (i.e. COM8) dans la liste de gauche. Dans le panneau de droite s'affichent les paramètres de configuration de celui-ci :

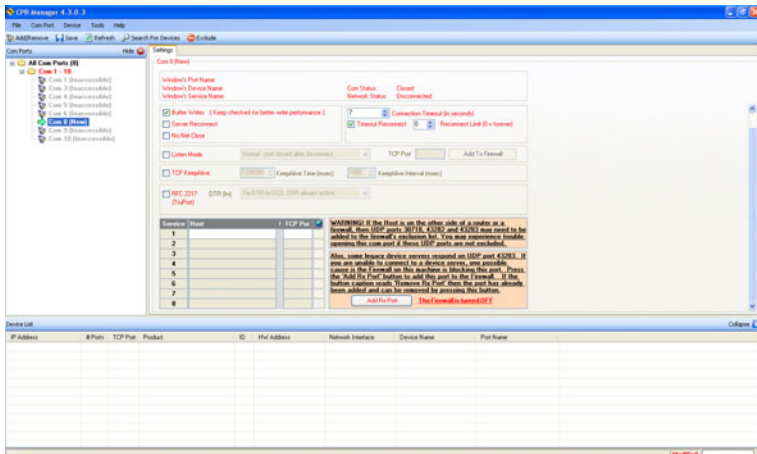



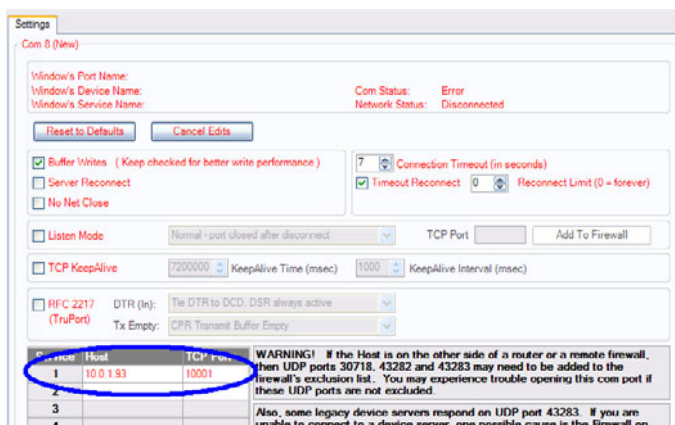
Figure 5.-

8. Détectez la station Digital To Tv. Pour cela, cliquez sur le bouton  ou sélectionnez le menu **Device > Search**. Sur la partie inférieure de la fenêtre d'affiche une liste de tous les systèmes détectés (dans l'exemple, un seul système):

IP Address	Port	TCP Port	Product	ID	HW Address	Network Interface	Device Name	Port Name
10.0.1.93 (1)		10001	XPort03	X5	00:20:4A:AD:3F:06	PROMAX		

Figure 6.-

9. Faites **double-click** sur la ligne correspondant à la station **DTTV** que vous souhaitez contrôler (s'il y en a plusieurs). Le logiciel assigne automatiquement au port **COM** sélectionné (i.e. COM8) l'adresse IP du système :



Settings
Com 8 (New)

Window's Port Name:
Window's Device Name:
Window's Service Name:

Com Status: Error
Network Status: Disconnected

Reset to Defaults Cancel Edits

Buffer Writes (Keep checked for better write performance)
 Server Reconnect
 No Net Close

7 Connection Timeout (in seconds)
 Timeout Reconnect 0 Reconnect Limit (0 = forever)

Listen Mode Normal - port closed after disconnect TCP Port Add To Firewall

TCP KeepAlive 7200000 KeepAlive Time (msec) 1000 KeepAlive Interval (msec)

RFC 2217 (TruPort) DTR (in): Tie DTR to DCD. DSR always active
Tx Empty: CPR Transmit Buffer Empty

Port Name	Host	TCP Port
1	10.0.1.93	10001
2		
3		
4		

WARNING! If the Host is on the other side of a router or a remote firewall, then UDP ports 30718, 43282 and 43283 may need to be added to the firewall's exclusion list. You may experience trouble opening this com port if these UDP ports are not excluded.

Also, some legacy device servers respond on UDP port 43283. If you are unable to connect to a device server, one possible cause is the Firewall on

Figure 7.-


10. Cliquez sur le bouton  pour sauvegarder la configuration. Si vous travaillez avec Windows XP ou supérieur, c'est possible que des fenêtres de confirmation supplémentaires apparaissent. Dans tous les cas répondez « Continuer » :



Figure 8.-

11. À partir de ce moment la station DTTV a été assignée à un port COM virtuel de votre PC. Vous pouvez tester la connexion en sélectionnant le port COM correspondant (i.e. COM8) dans la partie de COM Test (i.e. COM8 Test) et cliquez sur « OPEN » pour tester l'ouverture du port.

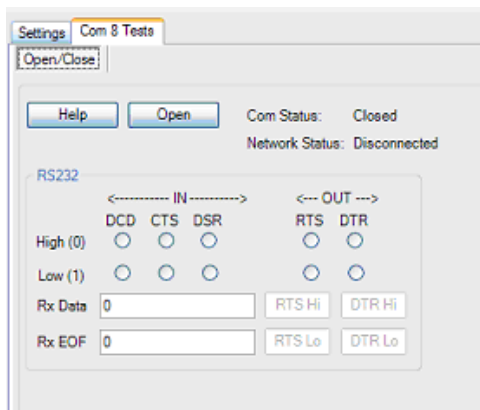


Figure 9.-

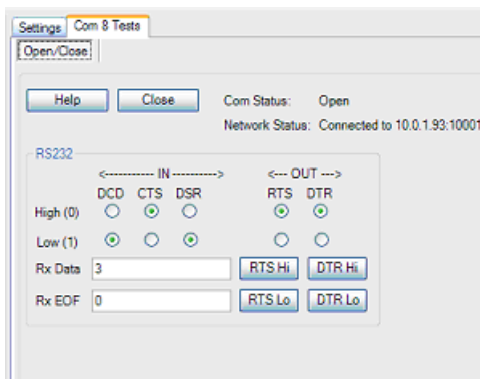


Figure 10.-

IMPORTANT : Prenez note du numéro de port COM utilisé, il vous le faudra pour effectuer la mise à jour du firmware des modules DT-xxx.



PROMAX ELECTRONICA, S. L.

Francesc Moragas, 71-75
08907 L'HOSPITALET DE LLOBREGAT (Barcelona)
SPAIN

Tel. : 93 184 77 00 * Tel. Intl. : (+34) 93 184 77 02

Fax : 93 338 11 26 * Fax Intl. : (+34) 93 338 11 26

<http://www.promaxelectronics.com>

e-mail: promax@promaxelectronics.com